

[Hinrichs Flurfördergeräte · Fuldastraße 32 · 26135 Oldenburg](#)

Fuldastraße 32 • 26135 Oldenburg, Germany

Telefon +49 (0)441 950 64 110 info@hinrichs-stapler.de

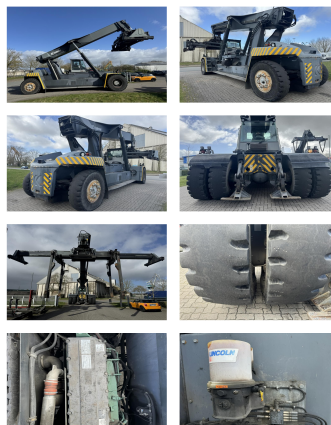
Telefax +49 (0)441 950 64 119 www.hinrichs-stapler.de

Kalmar DRF450-75C5XS

Capacity: 45000 kg
Year: 2008
Hours: 19930
Engine: Volvo TAD1250VE
Boom: Teleskop
Lift height: 15200 mm
Build height: 4750 mm

Commission Nr.: D4168
Tires front: 4 x Pneumatic tires ()
Tires rear: 2 x Pneumatic tires ()
Ont. condition: good
Technical condition: good

Rental Rates:



Add. equipment and attachments: Side Shift,

Description: Pile Slope Piggy Back Stabilizer 30' Autostop Movable cabin
Camera Central Lubrication

Video: www.youtube.com/embed//ygKD5jkc7rc

Lift height number of containers: 5
Capacity 1st row: 45000 kg
Capacity 2nd row: 45000 kg
Capacity 3rd row: 34000 kg

BANKEN: KSK Syke
OLB Oldenburg
Deutsche Bank Bremen

BLZ 291 517 00
BLZ 280 200 50
BLZ 290 700 50

KTO-Nr: 113 00 11 77 6
KTO-Nr: 130 00 211 00
KTO-Nr: 45 11 119 00

IBAN DE 66 291 517 00 113 00 11 77 6
IBAN DE 58 280 200 50 130 00 211 00
IBAN DE 75 290 700 50 045 11 119 00

SWIFT-BIC BRLADE215yk
SWIFT-BIC OLBODE H2
SWIFT-BIC DEUTDE33XXX