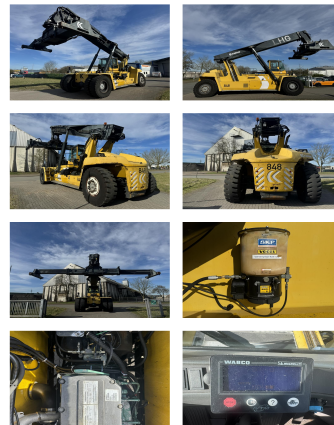


## Kalmar DRF450-70S5X

**Capacity:** 45000 kg  
**Year:** 2008  
**Hours:** 12700  
**Engine:** 6 Cyl. Volvo TAD1250VE  
**Boom:** Teleskop  
**Lift height:** 15100 mm  
**Build height:** 4700 mm

**Commission Nr.:** D4163  
**Tires front:** 4 x Pneumatic tires (40 - 60%)  
**Tires rear:** 2 x Pneumatic tires (40 - 60%)  
**Opt. condition:** good  
**Techn. condition:** good  
**Price:** **0 EUR**



**Add. equipment and attachments:**

Side Shift,  
Full cabin,

**Description:**

Engine Heater Tire Control System Central lubrication Camera

**Video:**

[www.youtube.com/embed//FLUGBkCgX5E](http://www.youtube.com/embed//FLUGBkCgX5E)

**Lift height number of containers:**

5

**Capacity 1st row:**

45000 kg

**Capacity 2nd row:**

41000 kg

**Capacity 3rd row:**

23000 kg

**BANKEN:** KSK Syke  
OLB Oldenburg  
Deutsche Bank Bremen

BLZ 291 517 00  
BLZ 280 200 50  
BLZ 290 700 50

KTO-Nr: 113 00 11 77 6  
KTO-Nr: 130 00 211 00  
KTO-Nr: 45 11 119 00

IBAN DE 66 291 517 00 113 00 11 77 6  
IBAN DE 58 280 200 50 130 00 211 00  
IBAN DE 75 290 700 50 045 11 119 00

SWIFT-BIC BRLA2E21Syk  
SWIFT-BIC OLBODE H2  
SWIFT-BIC DEUTDE33XXX