

[Hinrichs Flurfördergeräte · Fuldastraße 32 · 26135 Oldenburg](http://www.hinrichs-flurfördergeräte.de)

Fuldastraße 32 • 26135 Oldenburg, Germany

Telefon +49 (0)441 950 64 110 [info@hinrichs-stapler.de](mailto:info@hinrichs-stapler.de)

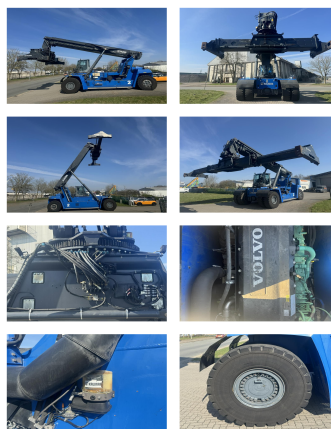
Telefax +49 (0)441 950 64 119 [www.hinrichs-stapler.de](http://www.hinrichs-stapler.de)

## Kalmar DRG450-65S5

**Capacity:** 45000 kg  
**Year:** 2017  
**Hours:** 13650  
**Engine:** 6 Cyl. Volvo TAD1171VE  
**Boom:** Teleskop  
**Lift height:** 15100 mm  
**Build height:** 4600 mm

**Commission Nr.:** D4144  
**Tires front:** 4 x Pneumatic tires (60 - 80%)  
**Tires rear:** 2 x Pneumatic tires (60 - 80%)  
**Ont. condition:** good  
**Technical condition:** good

## Rental Rates:



### Add. equipment and attachments:

Side Shift,  
Heater, Full cabin, Air conditioning,

movable cabin central lubrication camera 30' stop

### Description:

good running and working condition.

### Video:

[www.youtube.com/embed//rJcy7mtx-MY](http://www.youtube.com/embed//rJcy7mtx-MY)

### Lift height number of containers:

5

### Capacity 1st row:

45000 kg

### Capacity 2nd row:

32000 kg

### Capacity 3rd row:

16000 kg

**BANKEN:** KSK Syke  
OLB Oldenburg  
Deutsche Bank Bremen

BLZ 291 517 00  
BLZ 280 200 50  
BLZ 290 700 50

KTO-Nr. 113 00 11 77 6  
KTO-Nr. 130 00 211 00  
KTO-Nr. 45 11 119 00

IBAN DE 66 291 517 00 113 00 11 77 6  
IBAN DE 38 280 200 50 130 00 211 00  
IBAN DE 75 290 700 50 045 11 119 00

SWIFT-BIC BRLADE21Syk  
SWIFT-BIC OLBODE H2  
SWIFT-BIC DEUTDE33XXX